



B2.SOLAR

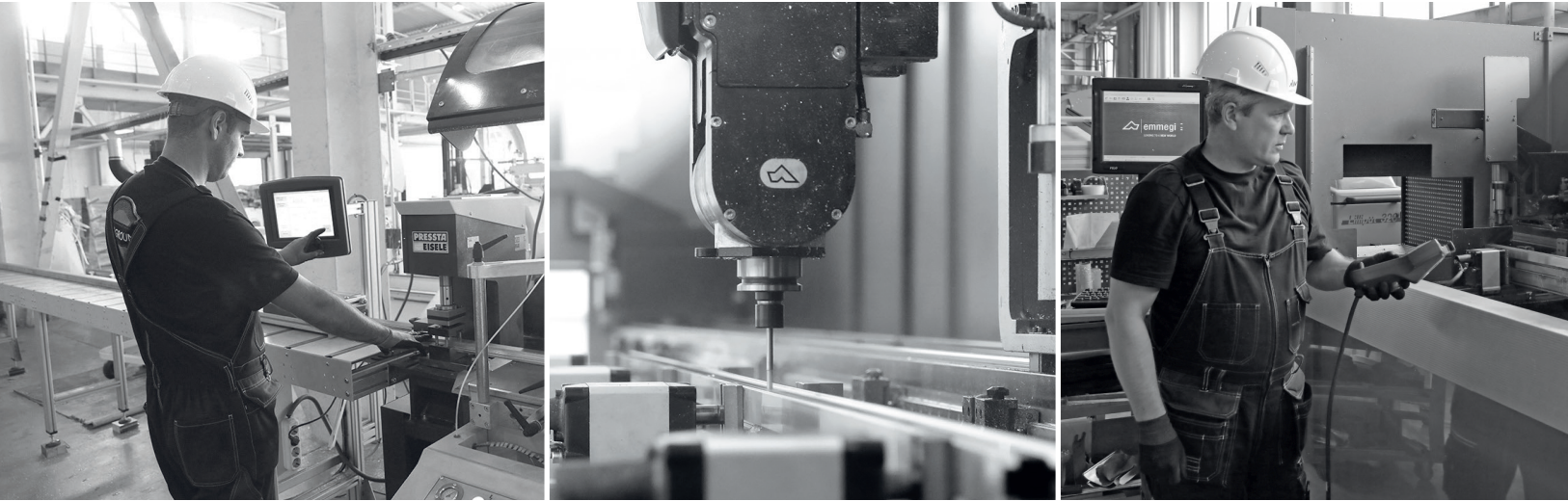
MOUNTING SYSTEMS

FOR PV- MODULES

Catalogue of structures and fasteners

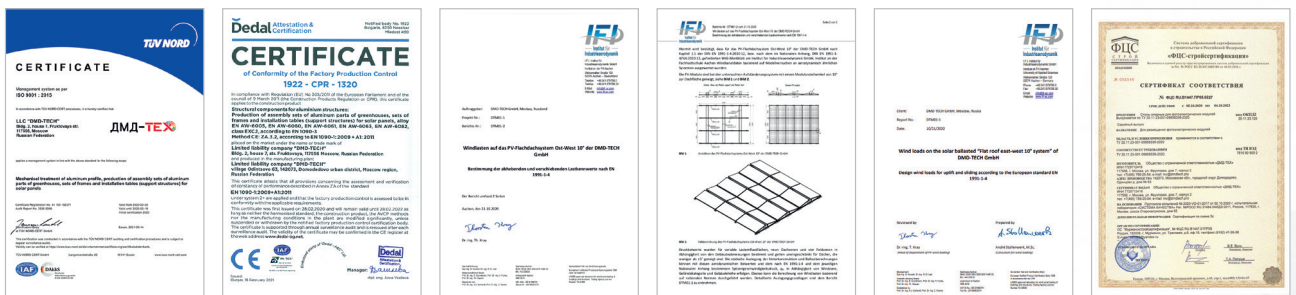


DMD-TECH IS:



- Russian manufacturing company since 2012
- Comprehensive implementation of projects of any complexity
- Individual solutions of our own engineering Team
- Production capacity of 12 000 tons per year
- High-tech production on the machines of Emmegi, Elumatec, Presta, Game, etc.
- Quality management system according to ISO 9001
- CE certification of manufactured products according to EN 1090
- Partner of the largest solar energy market players

Together with retailers we are developing a partner network that includes the interests of consumers and sellers.



They trust us:





CONTENT



Briefly about «DMD-TECH»	2
Ground Mounting system	4
Ground Mounting system	6
Carport Mounting system	8
Mounting system for a flat roof "East-West"	10
Mounting system for flat roof "South 15° (10°)"	12
Mounting system for profiled sheet	14
Mounting system for soft roof tiles	16
Mounting system for sandwich panels	18
Mounting system with adjustable angle	20
Elements of roof systems	22



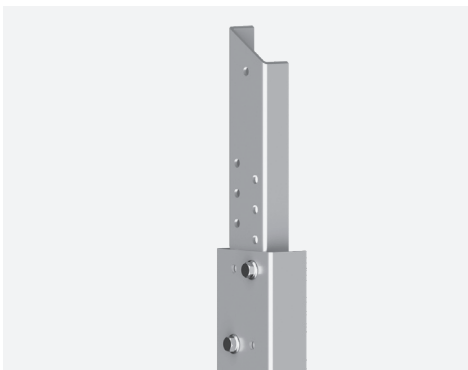


GROUND MOUNTED SYSTEM



The Ground Mounting system is a supporting structure for a solar power plant with installation in the ground using driven or screw piles. It can be also installed on concrete blocks or foundations.

The field support structure is widely used for the construction of industrial solar power plants using driven piles. For smaller projects, screw piles are more commonly used, which simplifies the installation process.



The arrangement of the modules can be either portrait in the 2 rows or landscape in the 4 rows, with an angle of inclination up to 45°

Location:	Ground installation
PV module orientation:	portrait
Tilt angle:	25° – 45°
Wind load:	53 kg/m ²
Snow load:	210 kg/m ²

Aluminum Alloy: 6063 T66

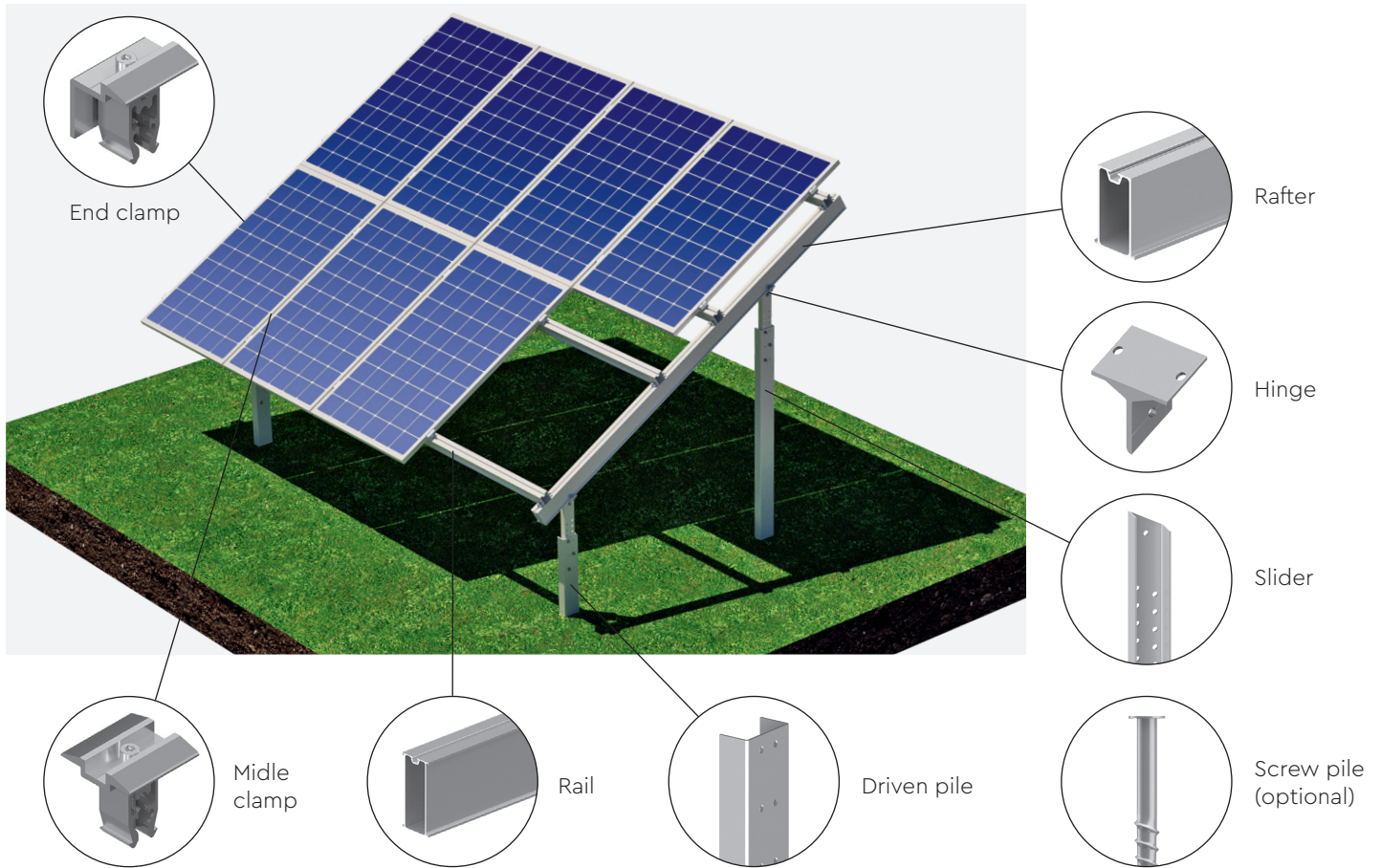
Safety and reliability: installation on driven, screw piles, concrete foundation/block

Warranty: 15 years, service life of 25 years





COMPONENTS



Name	2×10 PV-module kit	2×16 PV-module kit
Stand 1	4	6
Stand 2	4	6
Slider 1	4	6
Slider 2	4	6
Hinge	8	12
Rafter 120	4	6
Rail 80	8	12
Stopper	48	72
Rail connector 80	4	8
End clamp	8	8
Midle clamp	36	60
Cable holder	60	96

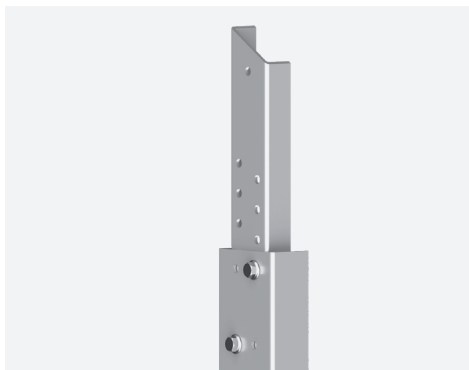


GROUND MOUNTED SYSTEM



The ground mounted system with a landscape orientation of the PV-modules has 4 located on top of each other. At the same time, the length of the structure depends on the requirements of the project and can be implemented with any number of modules.

The structure is installed on both driven and screw piles. The supports are designed in such a way that it is possible to mount and install on concrete blocks or on other devices used as a foundation.



The angle of inclination of the modules depends on the customer's requirements, and can be implemented up to 45°.

Location:	Ground installation
PV module orientation:	landscape
Tilt angle:	25° – 45°
Wind load:	53 kg/m ²
Snow load:	210 kg/m ²

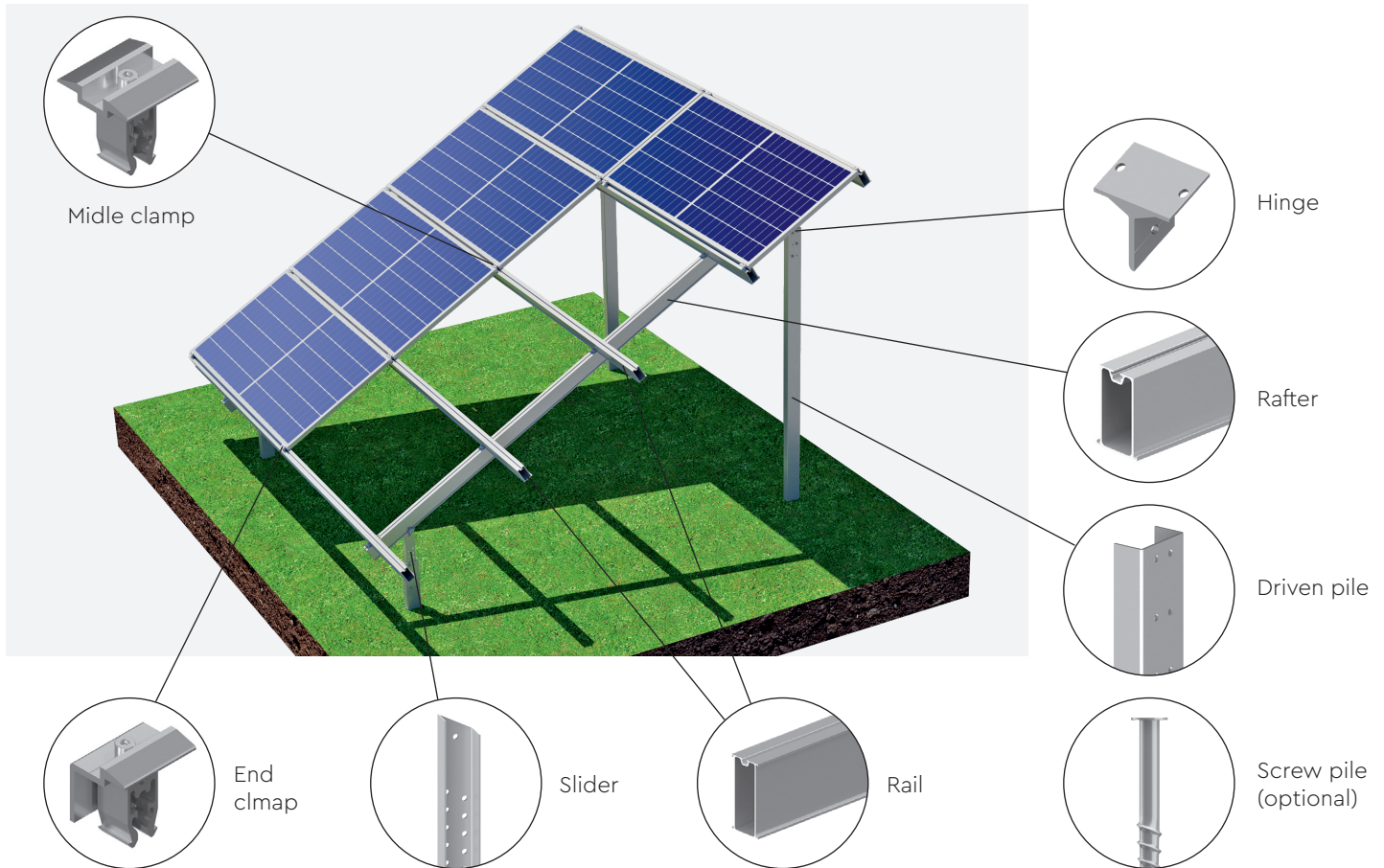
Aluminum Alloy: 6063 T66

Safety and reliability: installation on driven, screw piles, concrete foundation/block

Warranty: 15 years, service life of 25 years



COMPONENTS



Name	4×6 PV-module kit	4×12 PV-module kit
Stand 1	5	9
Stand 2	5	9
Slider 1	5	9
Slider 2	5	9
Hinge	10	18
Rafter 120	5	9
Rail 80	10	20
Stopper	70	126
Rail connector 80	5	15
End clamp	24	48
Midle clamp	36	72
Cable holder	72	144



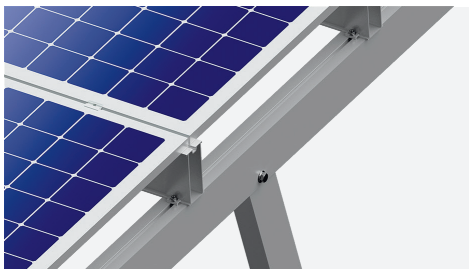
CARPORT



Carport is a covered parking with PV- modules installed instead of a roof covering.

It has a modular system that allows you to implement any projects in accordance with the customer's requirements.

The construction is designed for single-sided and double-sided car parking.



PV module orientation: portrait/ landscape

Tilt angle: 10°

Wind load: 53 kg/m²

Snow load: 210 kg/m²



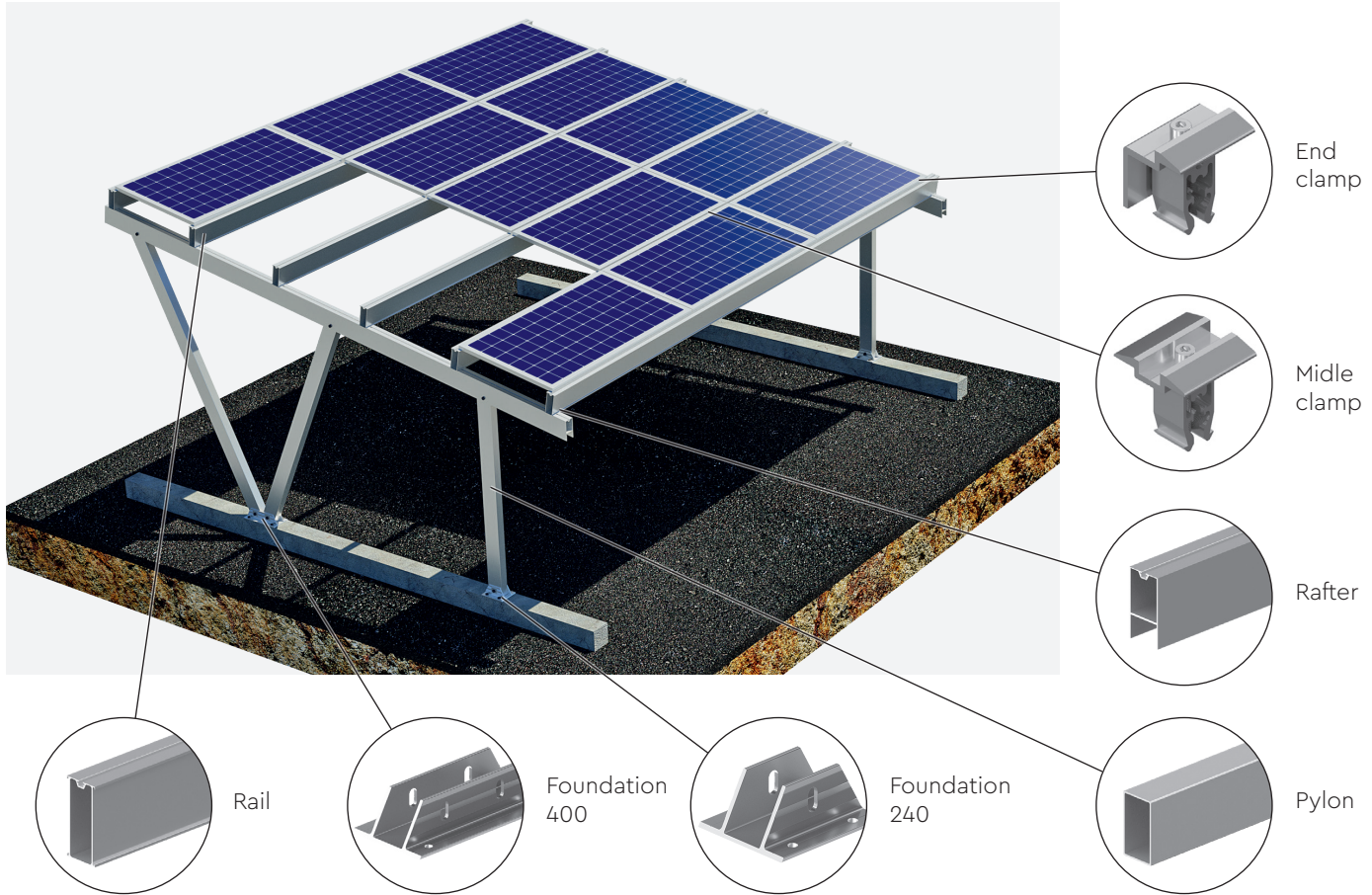
Aluminum Alloy: 6063 T6 и T66

Safety and reliability: the structure is installed on a concrete base

Warranty: 15 years, service life of 25 years



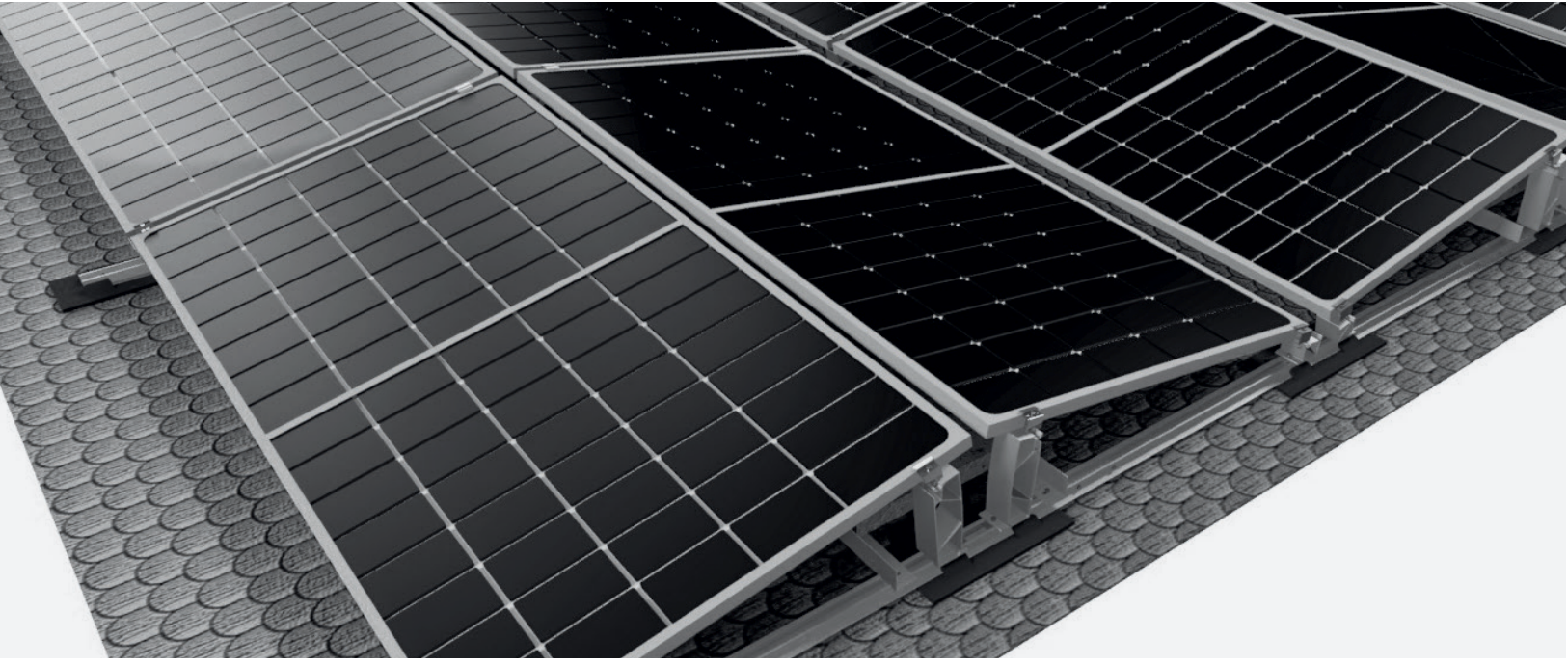
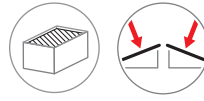
COMPONENTS



Name	One-side parking for 15 PV modules/2 cars	One-side parking for 15 PV modules/2 cars	Two-side parking for 30 PV modules/4 cars	Two-side parking for 30 PV modules/4 cars
	D1	D1 - 1	D3	D3 - 1
Foundation 400	2	1	4	2
Foundation 240	2	1	4	2
Pylon 1	2	1	4	2
Pylon 2	2	1	4	2
Pylon 3	2	1	4	2
Rafter	2	1	4	2
Rail 6500	6	0	12	0
Rail 6100	0	6	0	12
Rail Connector	0	6	0	12
Stopper	24	12	48	24
Midle clamp	24	24	48	48
End clamp	12	12	24	24
Cable holder	90	90	180	180



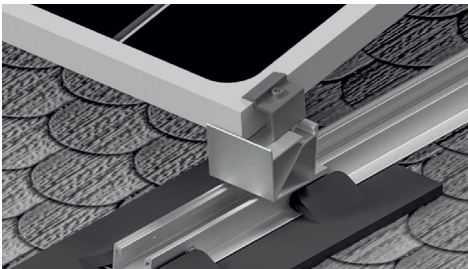
THE EAST-WEST SYSTEM



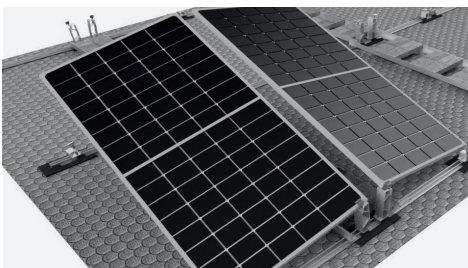
The East-West dome system is designed for flat roofs with an angle of inclination up to 3°. The key feature of the design is the installation on special mats that allow you to install the system without damaging the roof surface.

To fix the mounting system, a ballast is used, which is placed under the modules on special profiles.

If the roof angle is from 3.1° to 5°, the system can be used, but it must be fixed to the roof.



Installation location:	flat roof
PV module orientation:	landscape
Tilt angle:	10°
Wind load:	53 kg/m ²
Snow load:	210 kg/m ²



Aluminum Alloy: 6063 T6 и T66

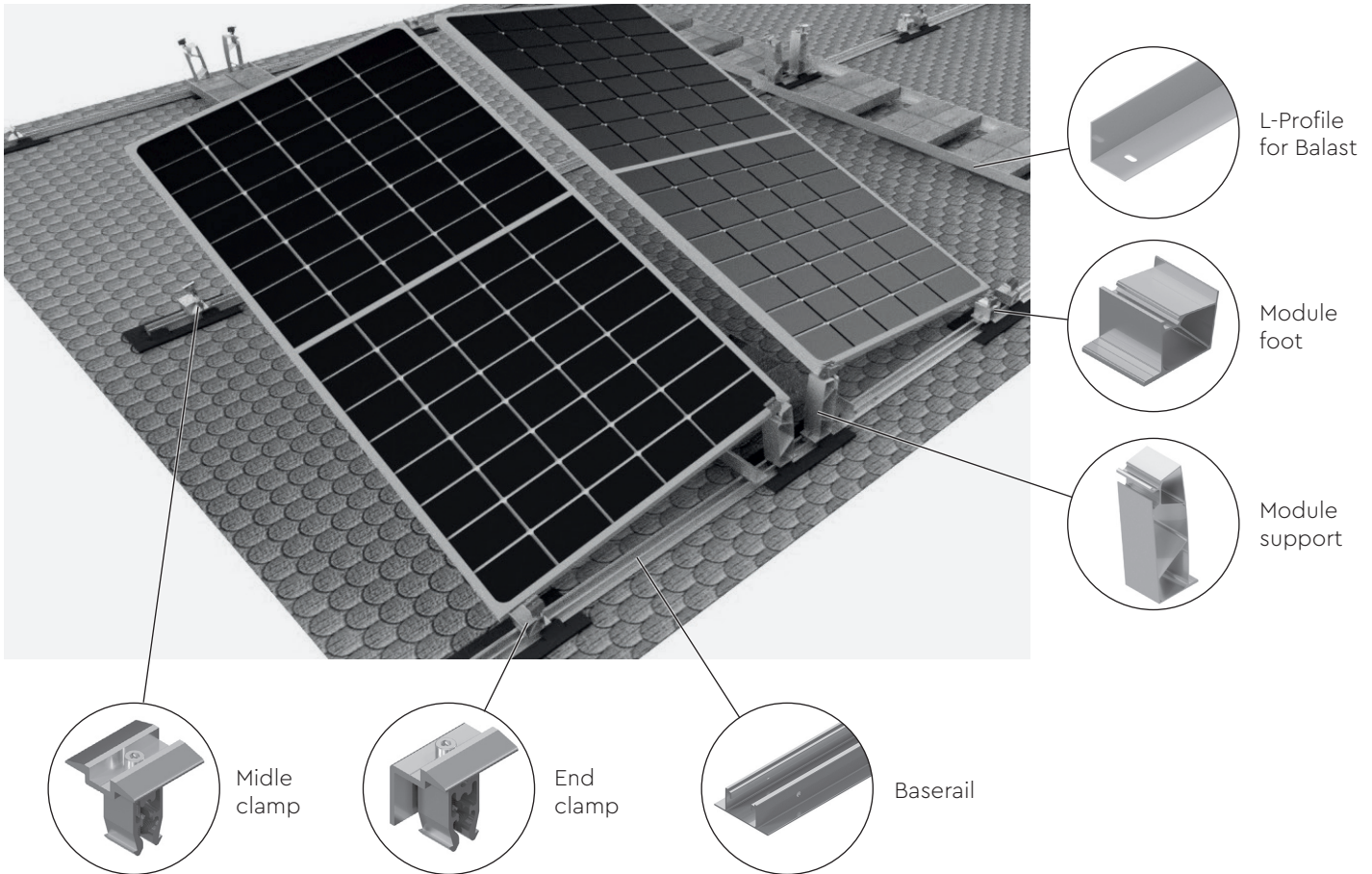
Safety and reliability: the structure is installed on a concrete base

Quick installation: minimum amount of elements

Warranty: 15 years, service life of 25 years



COMPONENTS OF THE SYSTEM FOR A FLAT ROOF

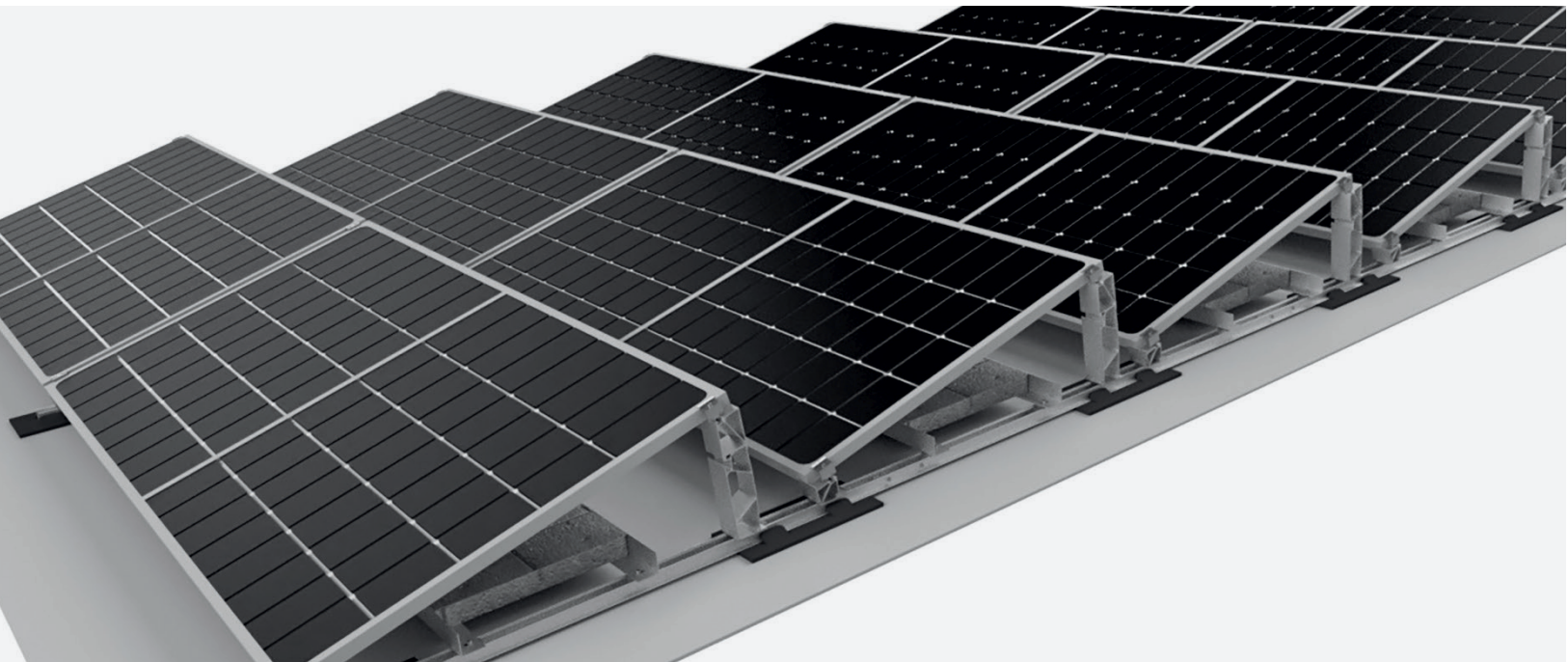
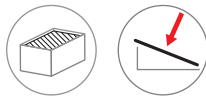


Name	2×1 PV module Kit	2×4 PV module Kit	2×8 PV module Kit
Baserrail	2	3	4
Module support 10°	4	6	8
Module foot 10°	4	6	8
L-Profile for Balast	2	4	6
End clamp	8	8	8
Midle clamp	0	4	8





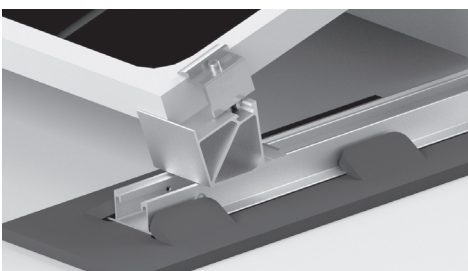
THE «SOUTH» SYSTEM



The mounting system "South" is designed for flat roofs with module orientation to the south. The angle of inclination of the photovoltaic modules is 15 ° (or 10 °). To obtain an angle of inclination 15 ° or 10 °, supports of different heights are installed.

A design feature is the location on special mats that allow you to install the installation system without damaging the roof. The roof slope should not exceed 3 °.

To fix the mounting system, ballast is used, which is placed under the modules on special profiles. If the roof slope is between 3.1 ° and 5 °, the system can be used, but it must be fixed to the roof.



Installation location:	flat roof
PV Modul orientation:	landscape
Tilt angle:	15° (10°)
Wind load:	53 kg/m ²
Snow load:	210 kg/m ²

Aluminum Alloy: 6063 T6 и T66

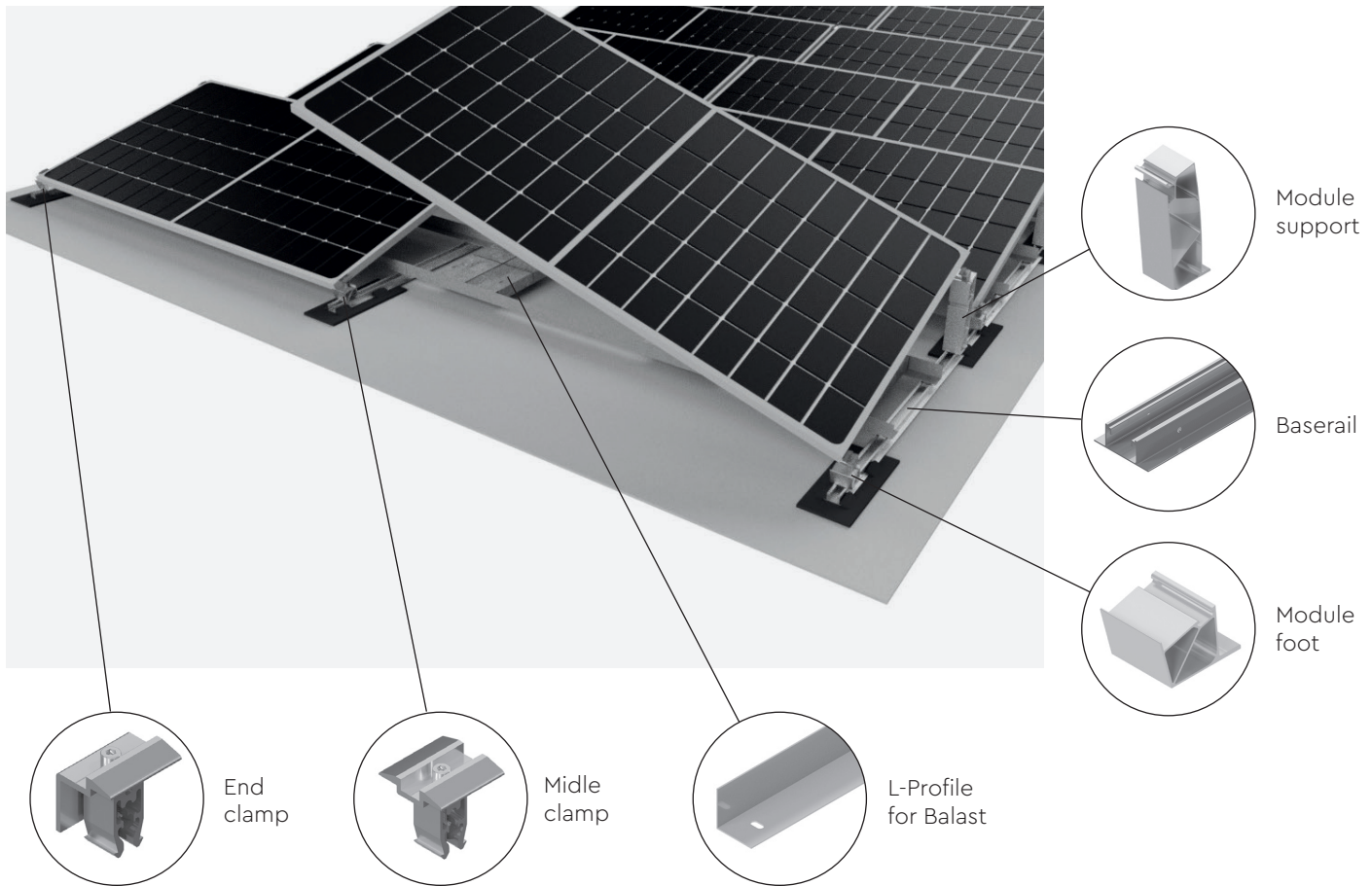
Safety and reliability: designed for installation without damaging the roofing material with the help of ballast

Quick installation: minimum amount of elements

Warranty: 15 years, service life of 25 years



SYSTEM COMPONENTS FOR FLAT ROOFS

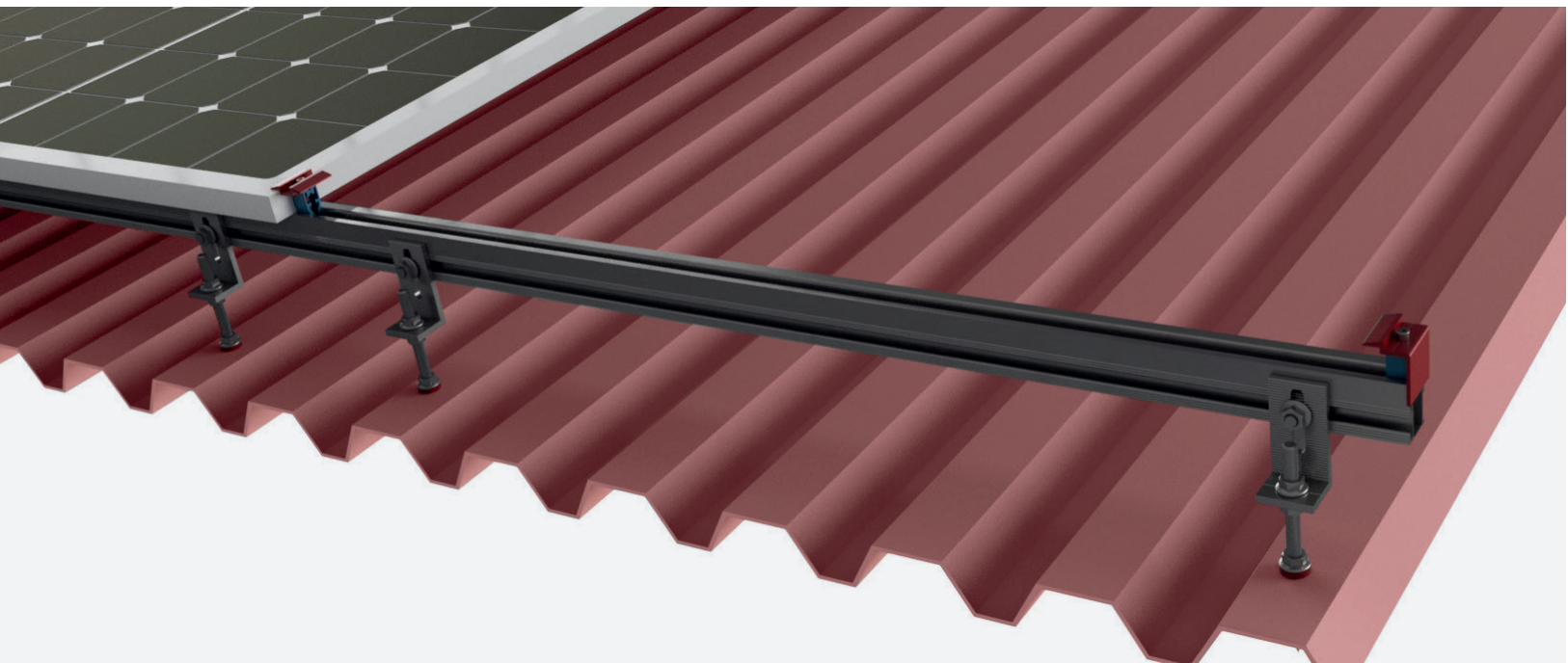
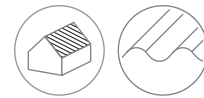


Name	2x1 PV-Module Kit	2x4 PV-Module Kit	2x6 PV-Module Kit
Baserail	2	5	7
Module support 10°	4	10	14
Module support extension	4	10	14
Module foot 15°	4	10	14
L-Profile for Balast	4	16	24
Wind protection	2	8	12
End clamp	8	8	8
Midle clamp	0	12	20



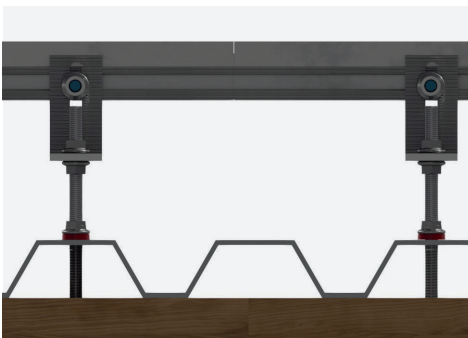
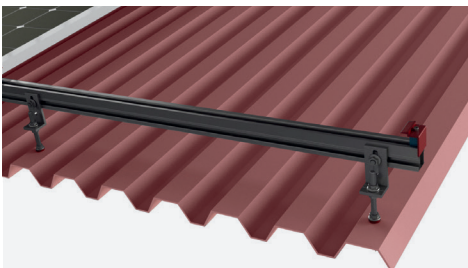


THE SYSTEM FOR THE PROFILED SHEET



The installation system for profiled sheet (also suitable for roofs made of metal tiles, ondulin and slate) is mounted directly into the wooden roof rafters using a threaded nagel.

This high-quality and stable fastening retains all the functions of the roof, is height-adjustable and is quickly installed.



Installation location:	Sloped roof
PV module orientation:	portrait/landscape
Tilt angle:	parallel to the roof
Wind load:	53 kg/m ²
Snow load:	210 kg/m ²

Aluminum Alloy: 6063 T6 и T66

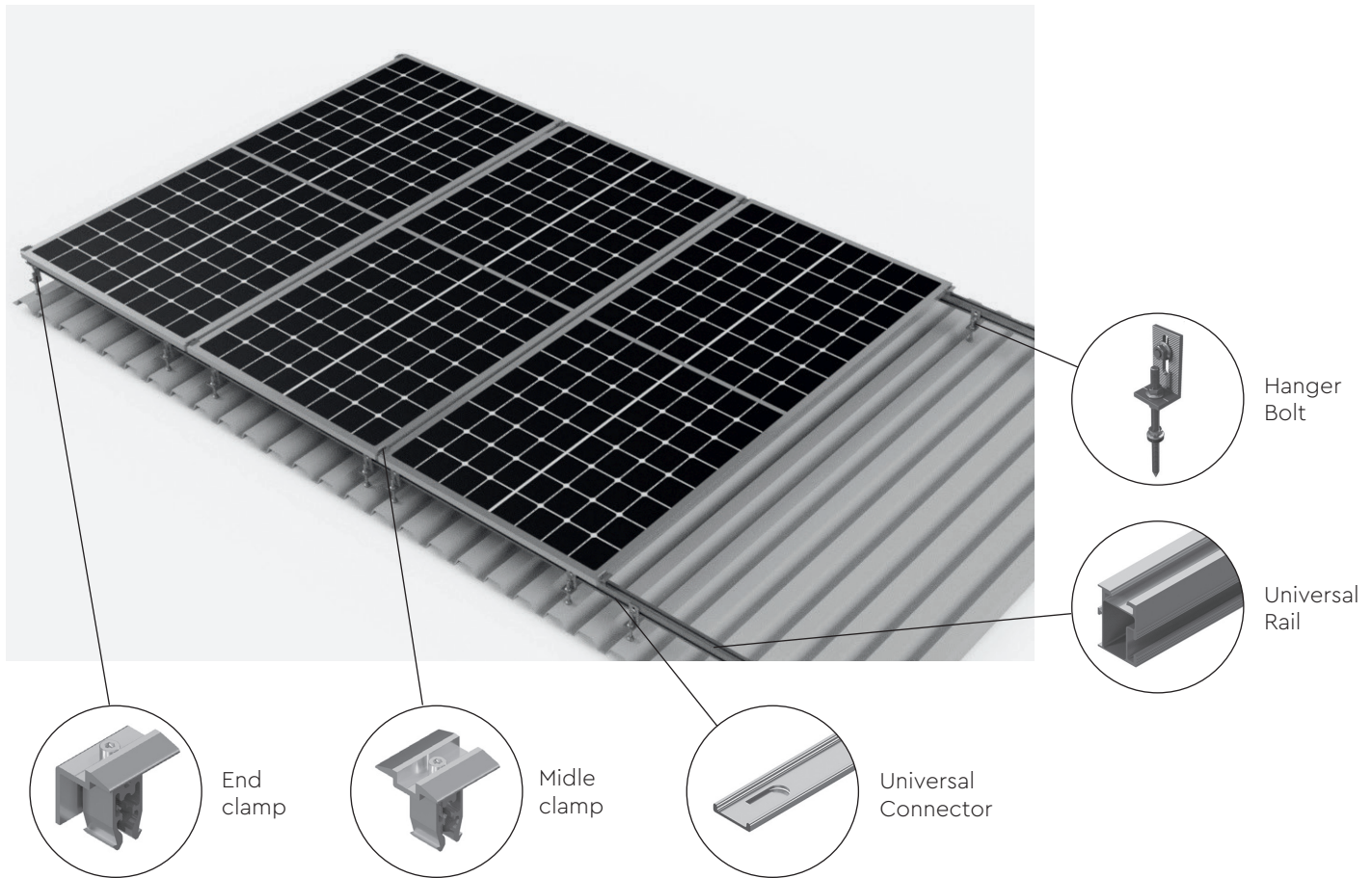
Safety and reliability: designed for mounting to the base/ crate of the roof

Quick installation: minimum amount of elements

Warranty: 15 years, service life of 25 years



COMPONENTS OF THE SYSTEM for the roof made of profiled sheet

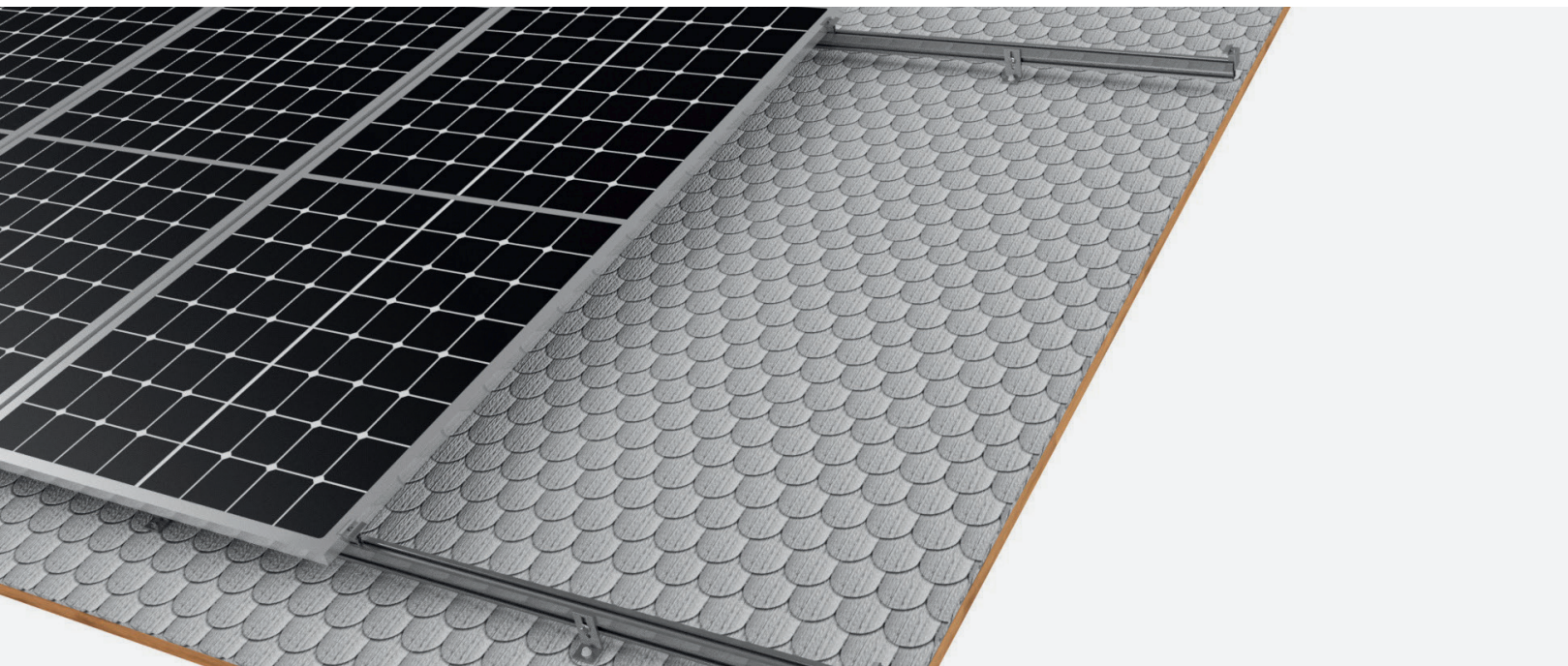
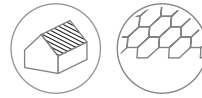


Name	1×2 PV-Module Kit	1×4 PV-Module Kit	1×8 PV-Module Kit
Universal Rail	2	4	8
Hanger Bolt	6	10	18
End clamp	4	4	4
Middle clamp	2	6	14

Name	1×3 PV-Module Kit	1×6 PV-Module Kit	1×9 PV-Module Kit
Universal Rail	2	4	6
Hanger Bolt	8	14	20
End clamp	4	4	4
Middle clamp	4	10	16

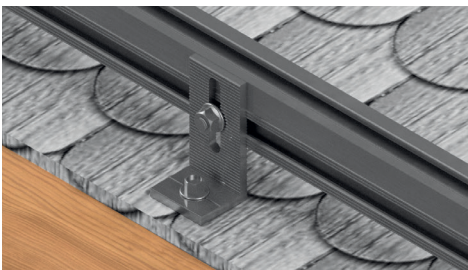


FLEXIBLE ROOF TILE SYSTEM



The mounting system for flexible shingles is mounted directly into the wooden base on which the flexible shingles are installed.

This simple, functional and stable attachment allows you to efficiently and quickly install structures on the roof.



Installation location:	Sloped roof
PV module orientation:	portrait/landscape
Tilt angle:	parallel to the roof
Wind load:	53 kg/m ²
Snow load:	210 kg/m ²

Aluminum Alloy: 6063 T6 и T66

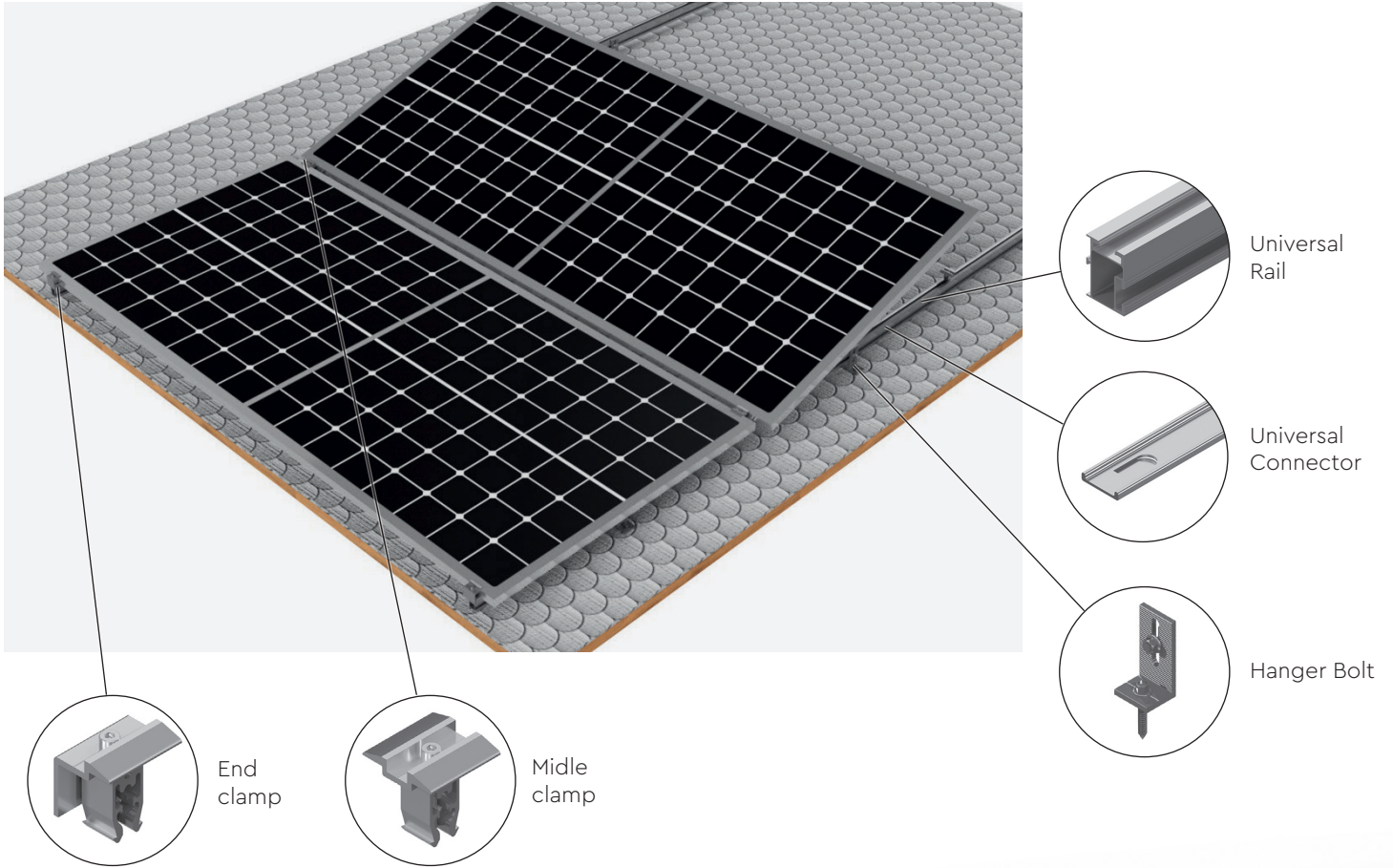
Safety and reliability: designed for mounting to the base/ crate of the roof

Quick installation: minimum amount of elements

Warranty: 15 years, service life of 25 years

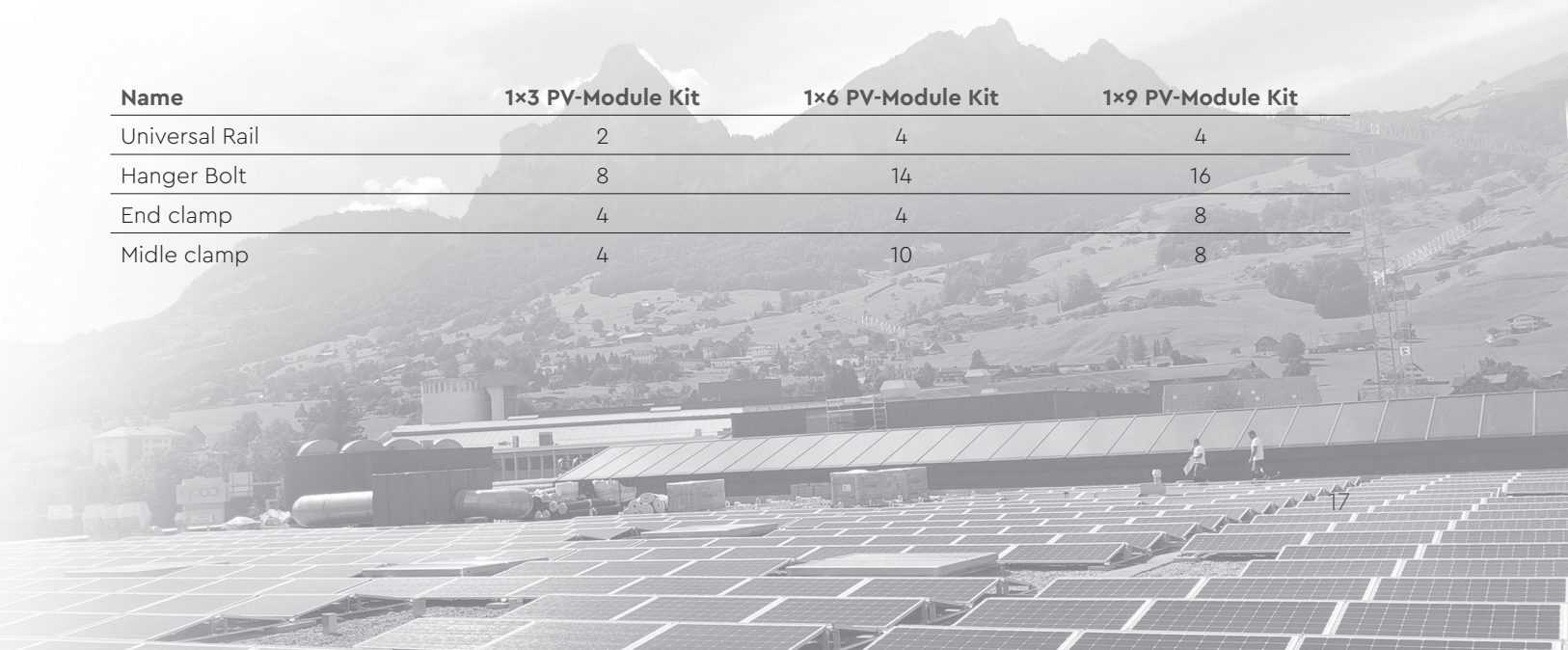


COMPONENTS OF THE SYSTEM for soft shingles



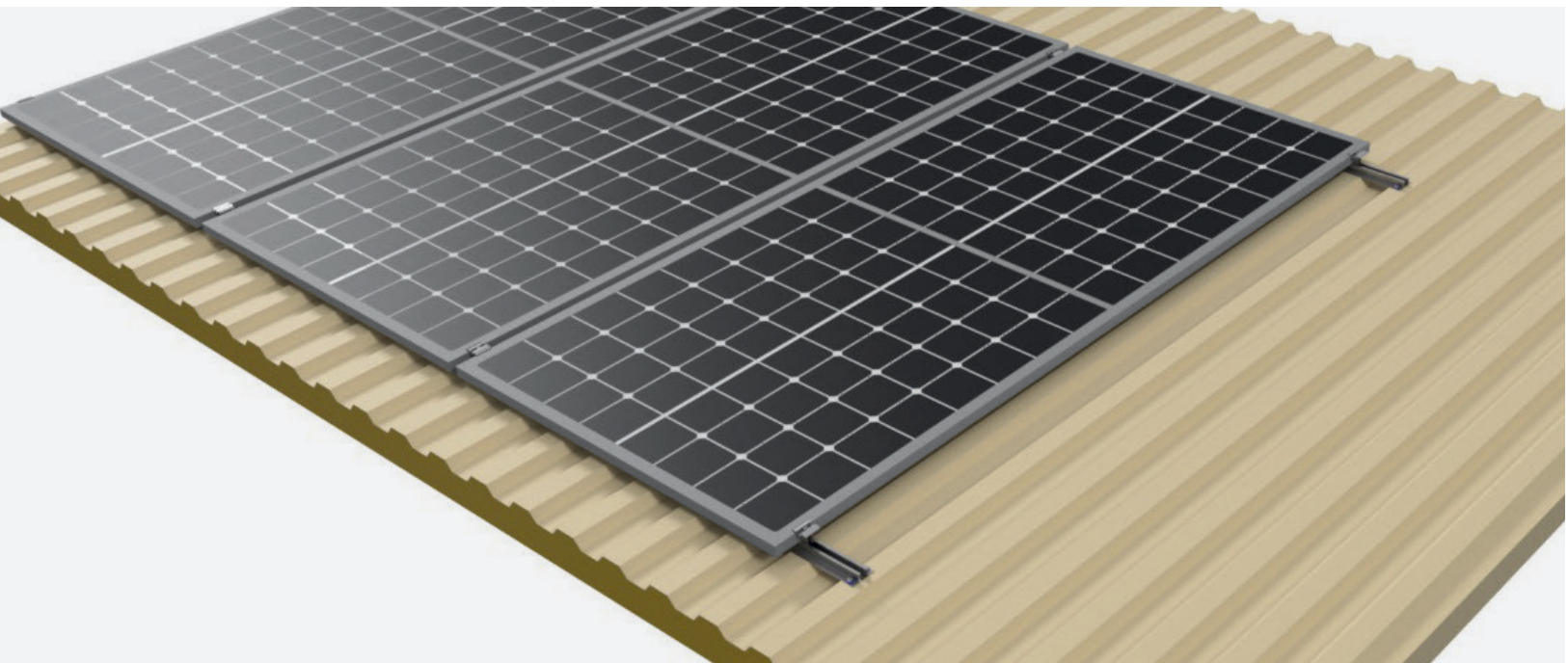
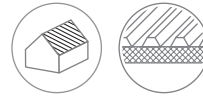
Name	1×2 PV-Module Kit	1×4 PV-Module Kit	1×8 PV-Module Kit
Universal Rail	2	4	8
Hanger Bolt	6	10	18
End clamp	4	4	4
Midle clamp	2	6	14

Name	1×3 PV-Module Kit	1×6 PV-Module Kit	1×9 PV-Module Kit
Universal Rail	2	4	4
Hanger Bolt	8	14	16
End clamp	4	4	8
Midle clamp	4	10	8



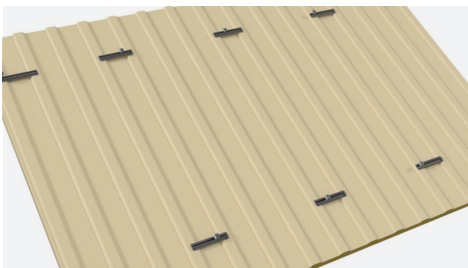
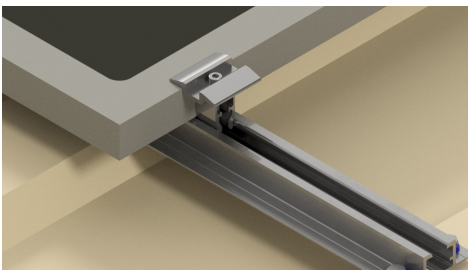


SYSTEM FOR SANDWICH PANELS



Mounting system for sandwich panels and trapezoidal profiled sheet with installation on "waves".

Quick and easy installation with a minimum amount of elements used.



Installation location:	Sloped roof
PV module orientation:	portrait/landscape
Tilt angle:	parallel to the roof
Wind load:	53 kg/m ²
Snow load:	210 kg/m ²

Aluminum Alloy: 6063 T6 и T66

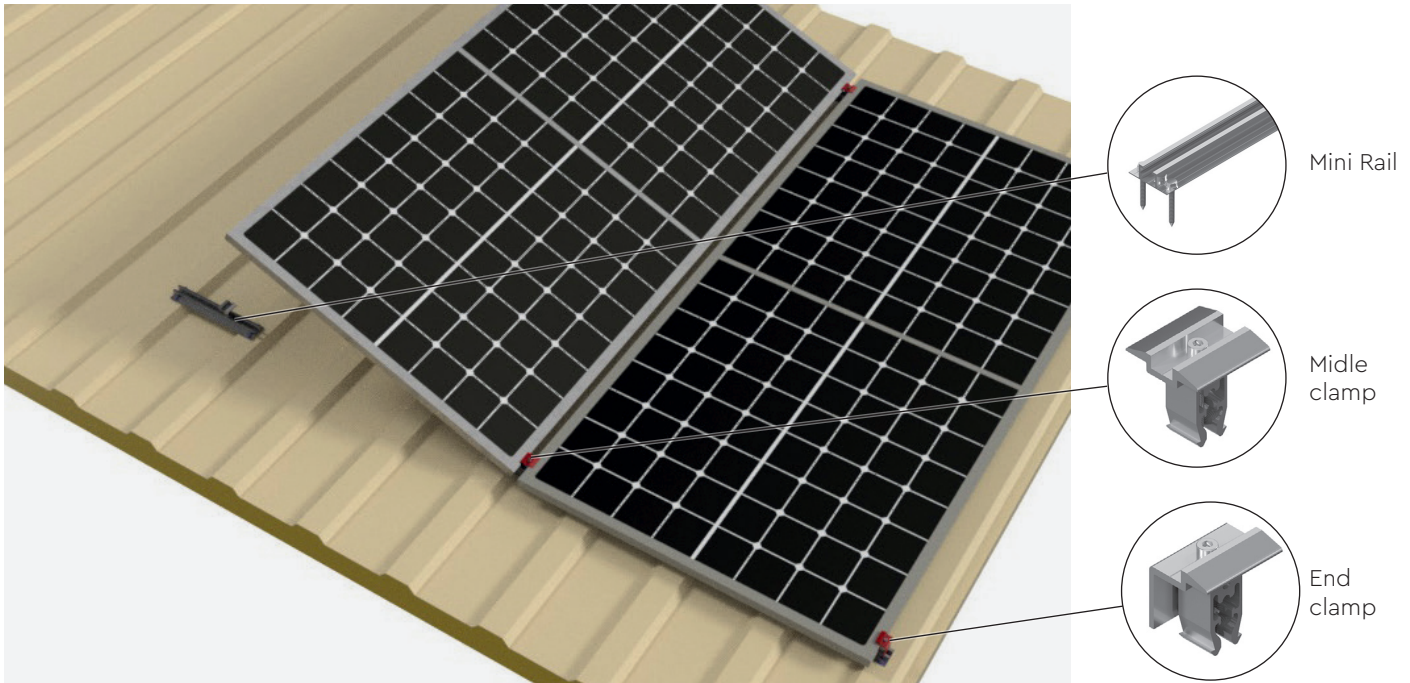
Safety and reliability: designed for attachment to the ridges of the profiled sheet

Quick installation: minimum amount of elements

Warranty: 15 years, service life of 25 years



SYSTEM COMPONENTS for sandwich panels

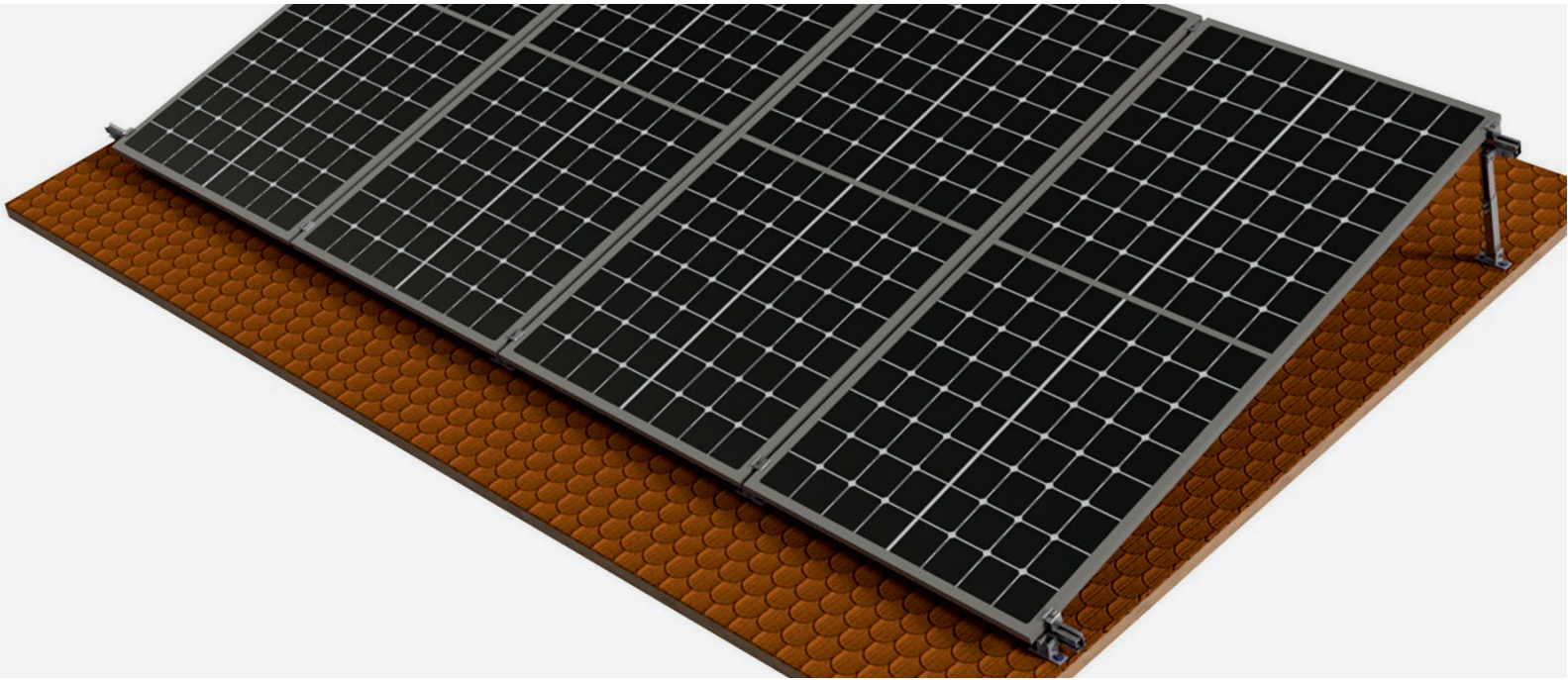
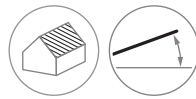


Name	1×2 PV-Module Kit	1×4 PV-Module Kit	1×8 PV-Module Kit
Mini Rail	6	10	18
End clamp	4	4	4
Midle clamp	2	6	14



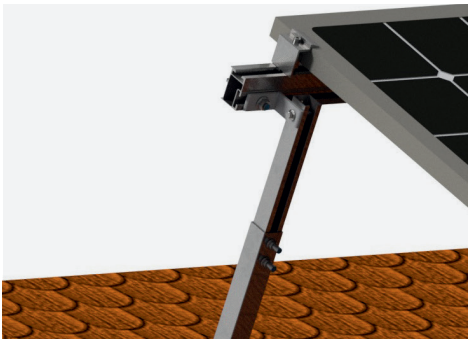


ADJUSTABLE TILT ANGLE SYSTEM



The installation system with an adjustable tilt angle will allow you to get the maximum output from a solar power plant by adjusting the tilt angle.

It is suitable for roofs where it is possible to fix brackets to the roof structure.



Installation location:	Sloped/Flat roof
PV module orientation:	portrait
Tilt angle:	15° - 30°, 30° - 60° to the roof
Wind load:	53 kg/m ²
Snow load:	210 kg/m ²

Aluminum Alloy: 6063 T6 и T66

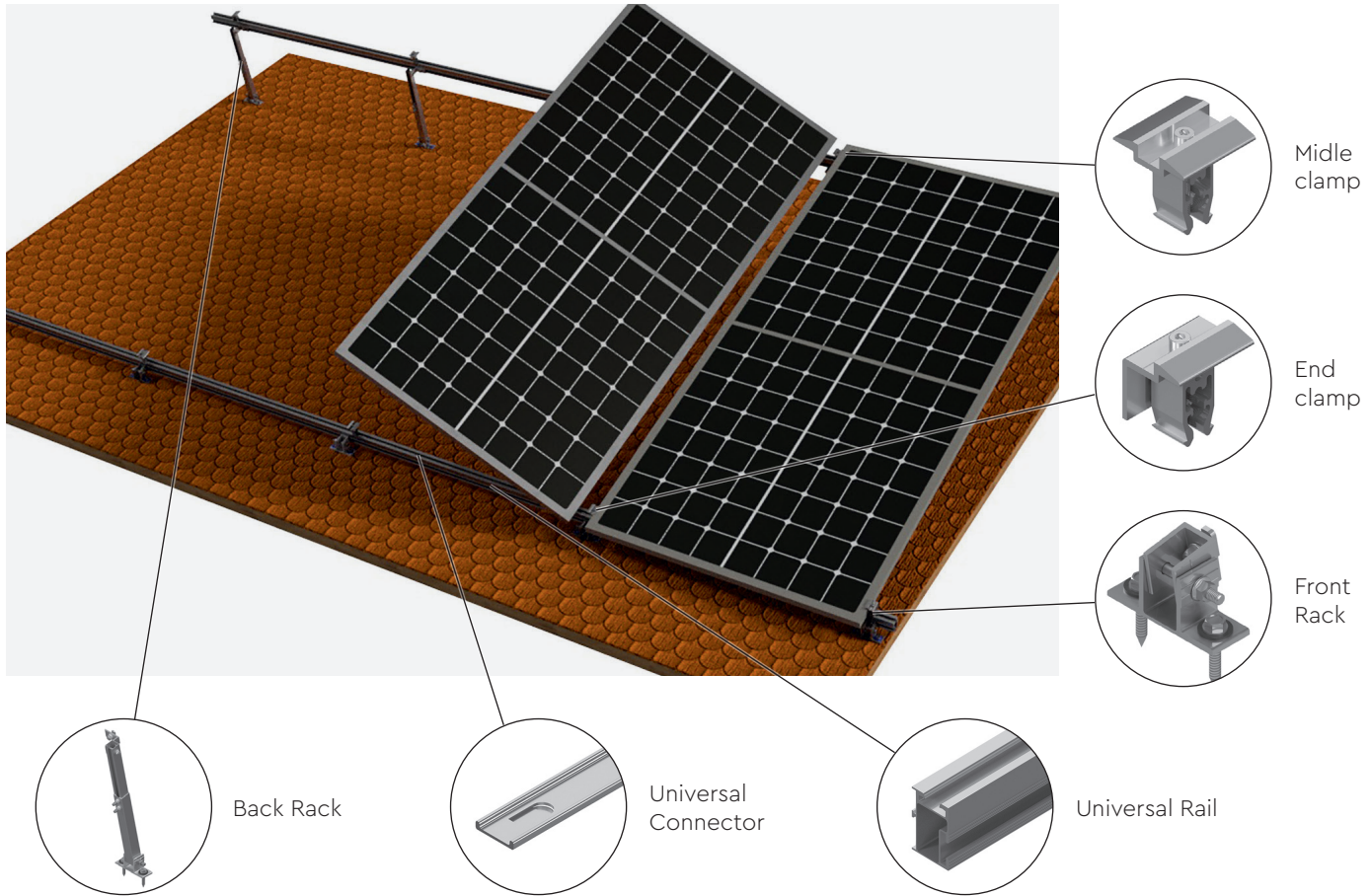
Safety and reliability: suitable for both, flat and pitched roofs

Universal system: designed for all types of roofs with the possibility of attaching supports to the roof

Warranty: 15 years, service life of 25 years



SYSTEM COMPONENTS

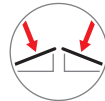




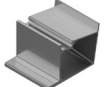
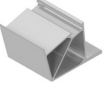
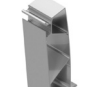
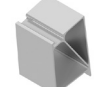
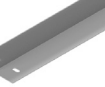

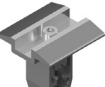



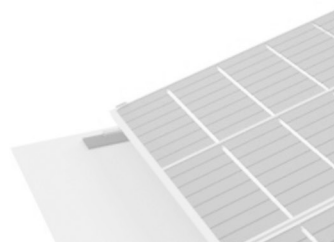
Name	1×2 PV-Module Kit	1×4 PV-Module Kit	1×8 PV-Module Kit
Universal Rail	2	4	8
Front Rack (low)	3	5	9
Back Rack (high)	3	5	9
End clamp	4	4	4
Midle clamp	2	6	14

Name	1×3 PV-Module Kit	1×6 PV-Module Kit	1×9 PV-Module Kit
Universal Rail	2	4	6
Front Rack (low)	4	7	10
Back Rack (high)	4	7	10
End clamp	4	4	4
Midle clamp	4	10	16



SYSTEMS FOR FLAT ROOFS

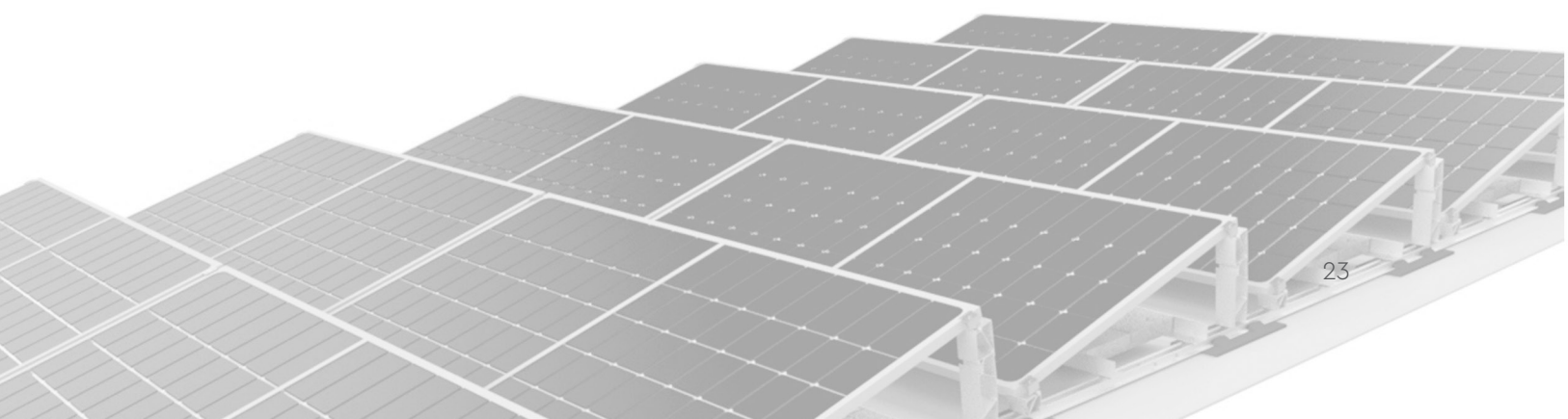
		East-West	South 10°	South 15°
				
	Baserail	●	●	●
	Baserail Connector 140	●	●	●
	Module foot 10	●	●	○
	Module foot 15	○	○	●
	Module support 10	●	●	●
	Module support extender 15	○	○	●
	L-Profile for Balast 50x50	●	●	●
	Wind protection	○	●	●
	Midle clamp	●	●	●
	End clamp	●	●	●





SYSTEMS FOR SLOPING ROOFS

	Profiled sheet	Flexible roof tiles	Sandwich panel	Adjustable angle
Hanger Bolt 37x80	●	●	○	○
Back Rack	○	○	○	●
Front Rack	○	○	○	●
Mini Rail	○	○	●	○
Universal Rail	●	●	○	●
Universal Connector 150	●	●	○	●
Middle clamp	●	●	●	●
End clamp	●	●	●	●





Frame kits
for PV modules



Mounting systems
for PV modules



VENLO
Greenhouse Systems

DMD-TECH X



DMD-TECH X

Росла®

ТАТПРОФ

DMD-Tech

Manufacturing: Republic of Tatarstan,
Naberezhnye Chelny,
Tsekhovoy proezd 6

Office: Moscow, Obrucheva street 16/1



WWW.B2.SOLAR
ek@dmdtech.pro
+49 (7621) 986 4911

